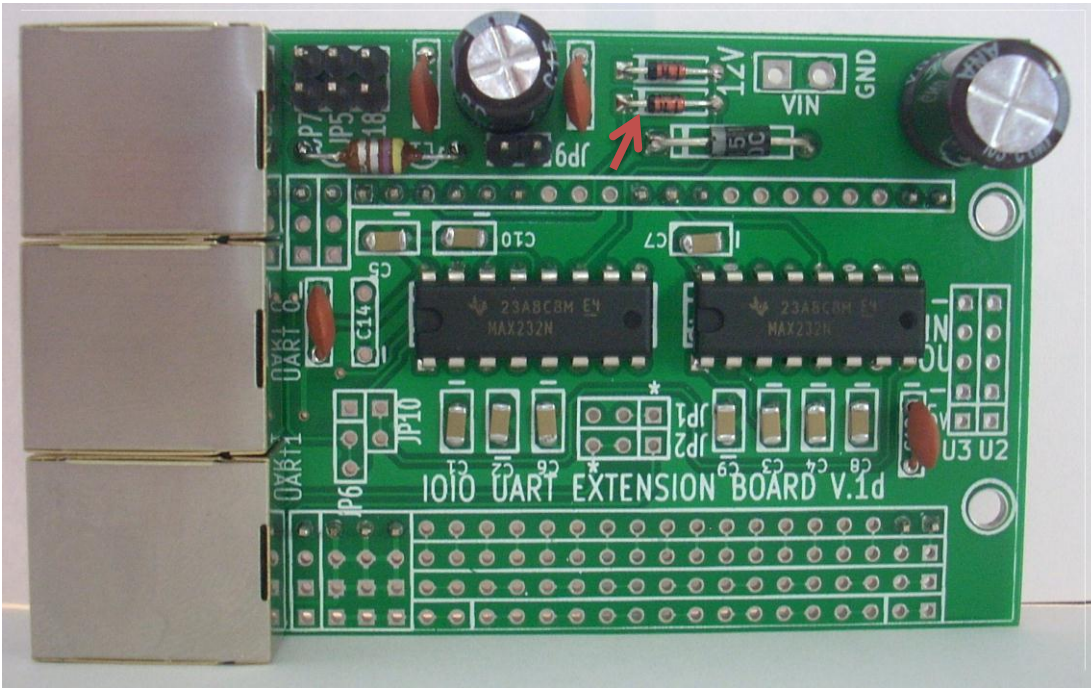


REV.1D differences

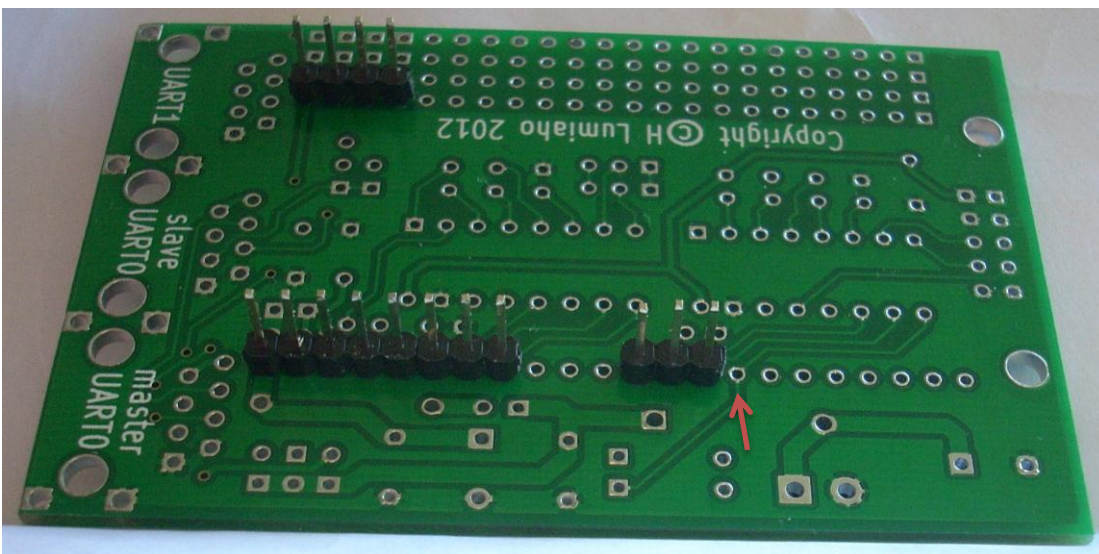
-Two diodes D2, D3 added

-Onboard fuse removed

-Jumpers JP1, JP2, JP6 and JP10 is NOT USED



Connection from IOIO CARD PIN 13 is NOT used.



NOTE! Half of UART3 is used to make splitter for UART0, therefore pinheader to pin 13 is not used (red arrow).