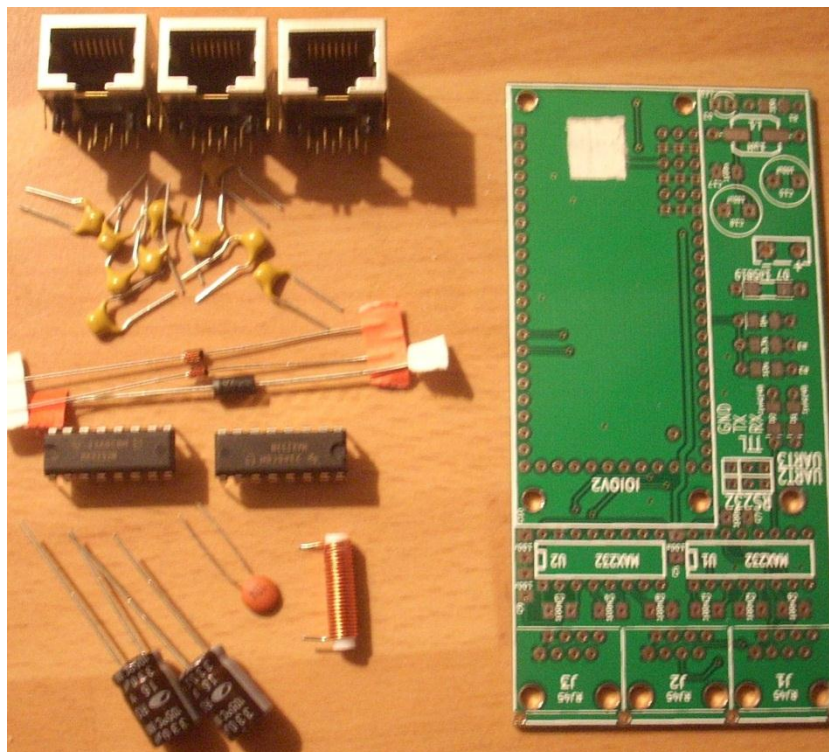


Soartronic IOIO UART interface v2a
assembly manual
for
first generation IOIO



www.soartronic.com

STEP 1. Make sure you have the right IOIO card!

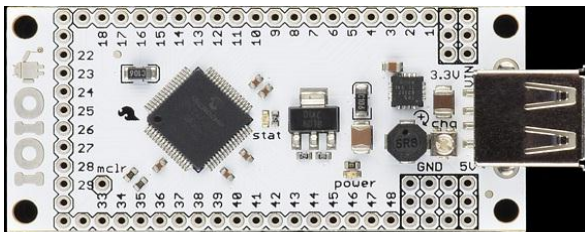
Please read this manual before do nothing!

If you cannot understand any of the steps below, please send an email to us and ask.

This manual shows how to build Soartronic IOIO interface v2a for use the first generation IOIO card.

This PCB can also be used with IOIO version 2, however if assembled using these instructions, this board will not work as expected, and the IOIO card may be damaged.

Your IOIO card should look like this:



If you have IOIO v2 otg card, this manual is not for you.

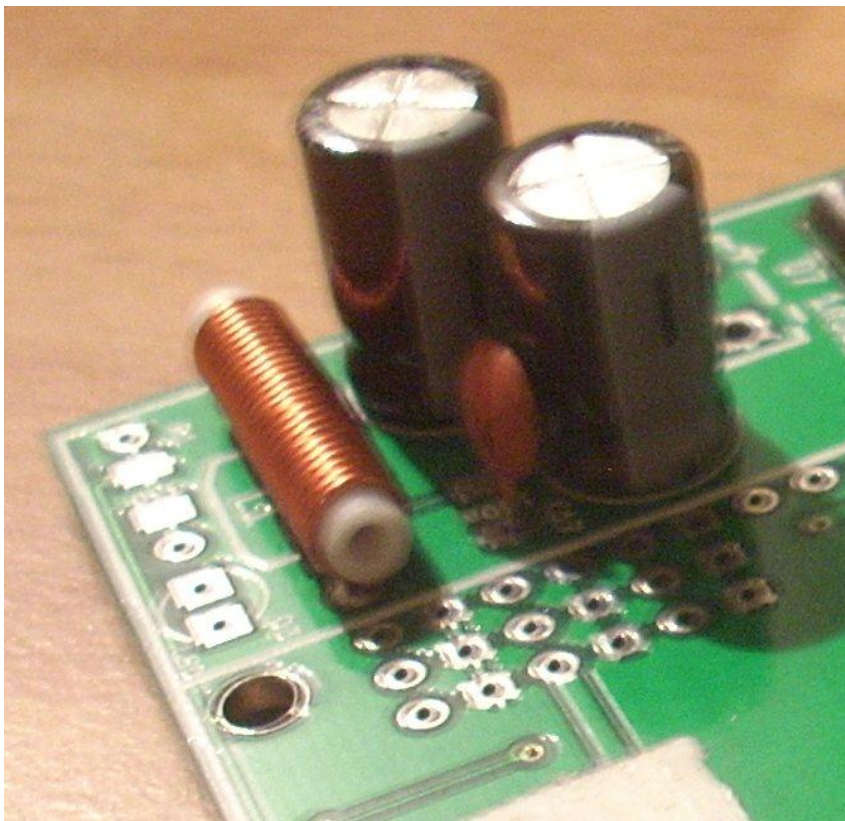
In that case, please visit www.soartronic.com and find the correct manual.

STEP 2. soldering electrical components

Follow these instructions and solder all other components before the IOIO board.

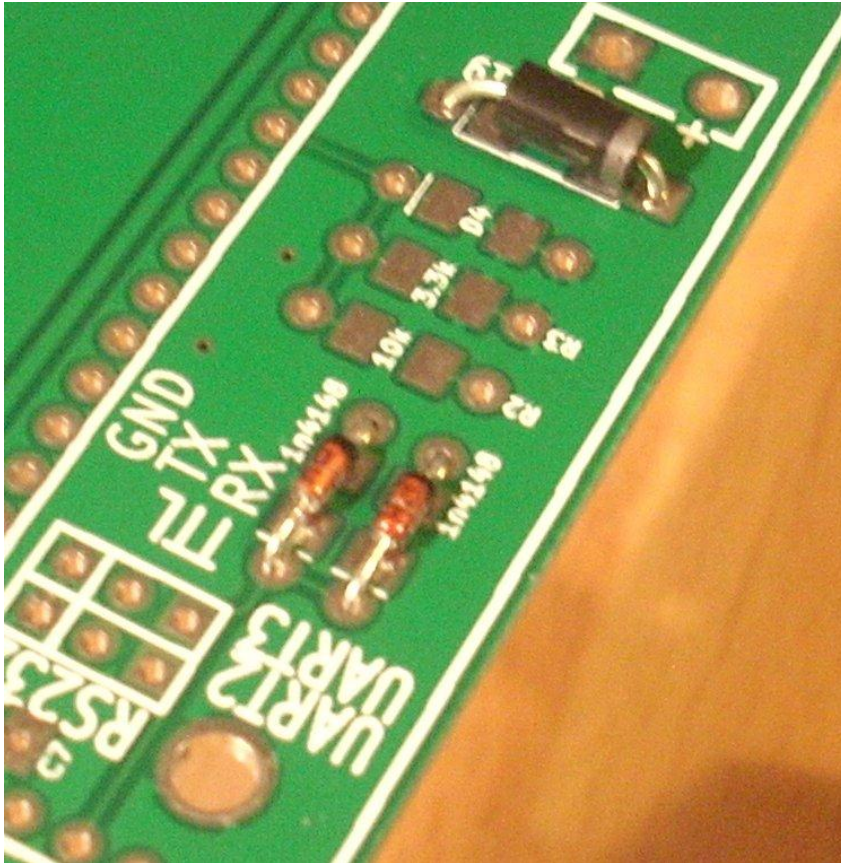
Place coil, 100nF capacitor and two electrolyte capacitors.

please note: electrolyte capacitors have polarity!



Place three diodes.

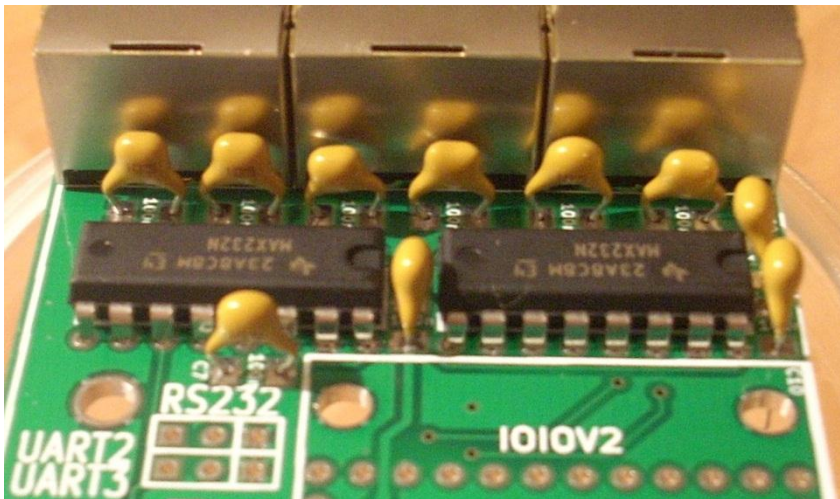
these are also polarity parts, place them as shown in image.



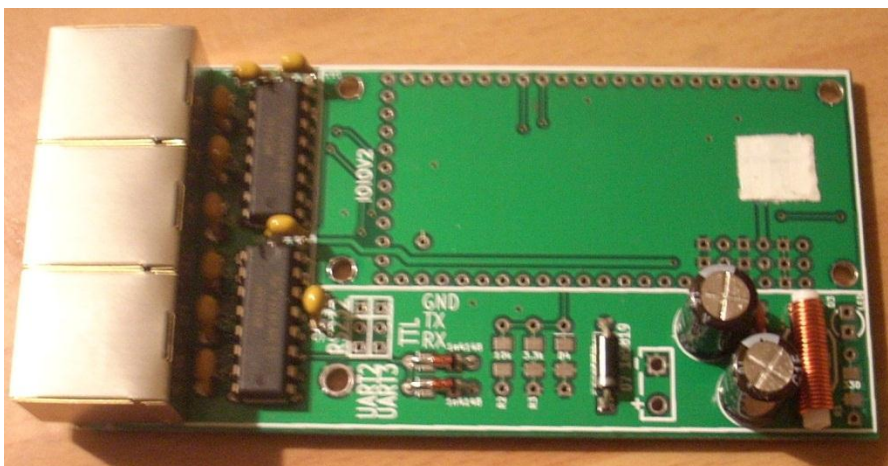
Place two max232's ,RJ45 connectors and ten capacitors.

capacitors are either 100nF or 1uF

depending version of max232.

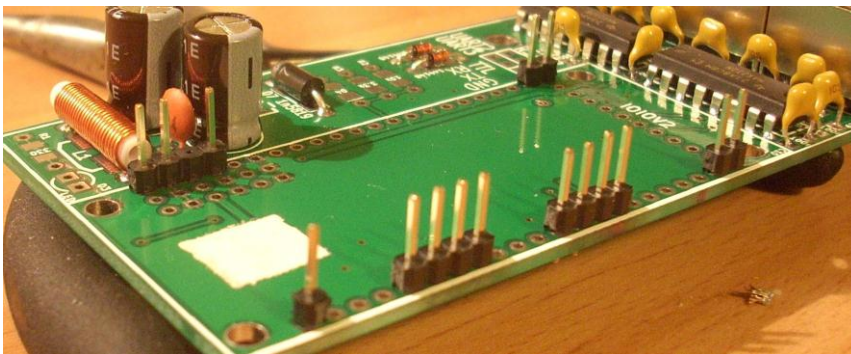
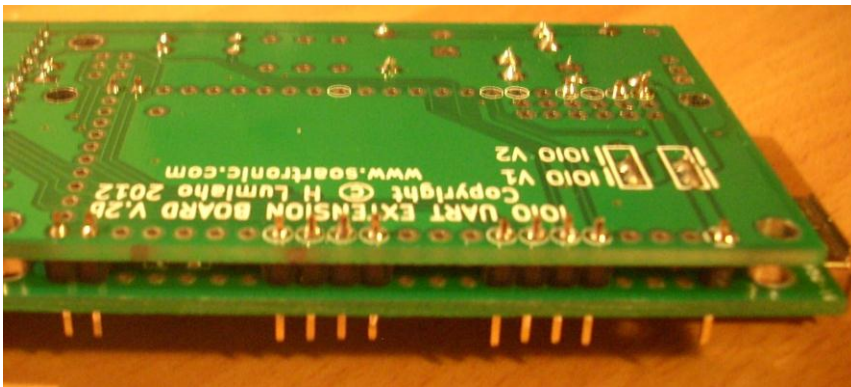
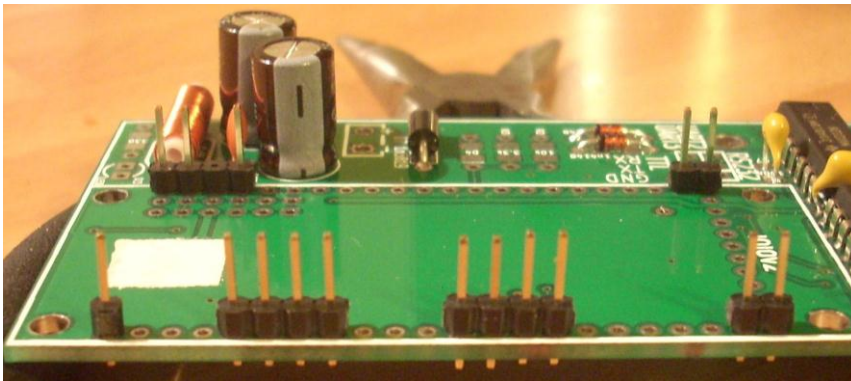


Now your PCB should look like this:

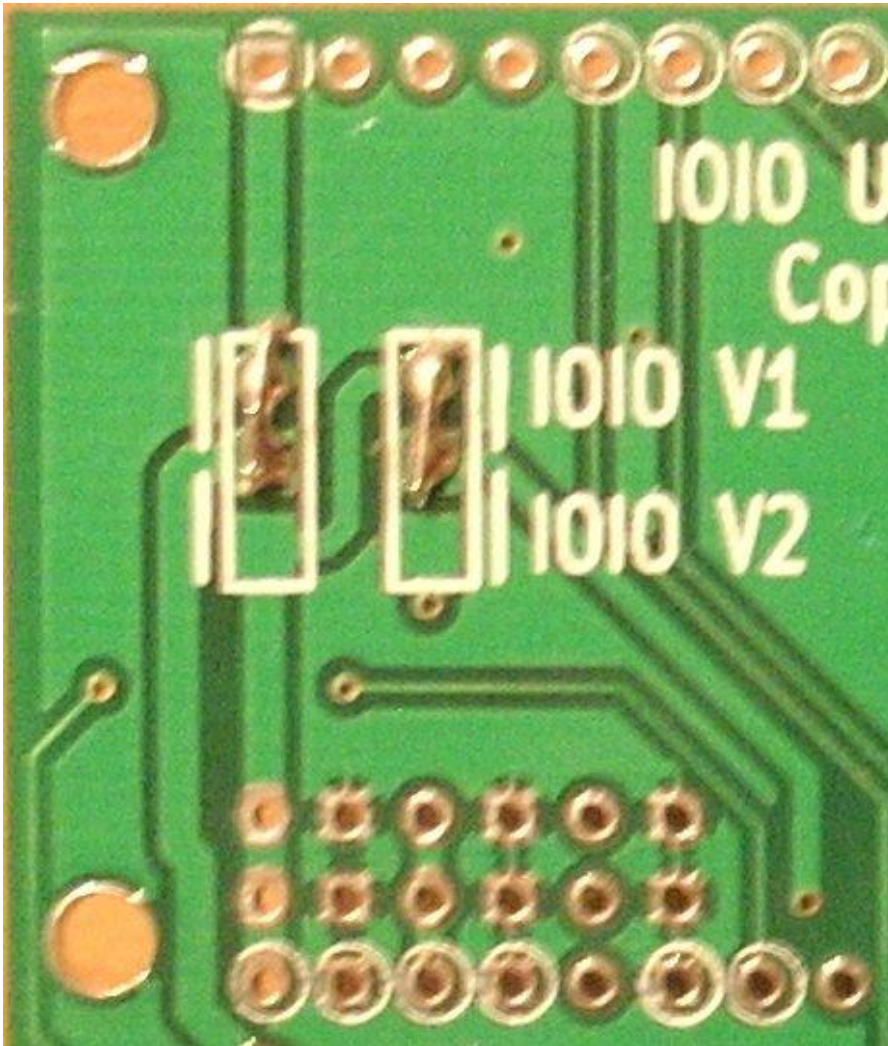


Place pin-headers for IOIO card as shown in images below.

THIS IS IMPORTANT!!! For first generation IOIO do NOT add any extra pins!



Connect solder points in the backside of the PCB as shown in this image.



Solder connections made in image are for first generation IOIO card

Finally solder the IOIO card.

The USB connector should point into the opposite direction with the RJ45 connectors, and all the components and the USB connector should be on the TOP.

You need to have this kind of IOIO card!

